



311SM3-T



Actual product appearance may vary.

SM Series Subminiature Basic Switch, Single Pole Double Throw (SPDT), 250 Vac, 5 A, Straight Lever Actuator, Solder Termination

Features

- Long operating life
- Elongated mounting hole for easier, more accurate mounting
- Choice of actuation (plunger, as well as a variety of integral and auxiliary actuators)
- Choice of electrical termination (solder, quick connect, PCB)
- Choice of operating characteristics (sensitive differential travel as low as 0,0254 mm [0.001 in] maximum, low operating force to 0,56 N [2.0 oz] maximum)
- Optional series constructions available (gold contacts for low energy switching, bifurcated gold contacts for maximum reliability, power load switching capability to 11 A)
- MIL-PFR-8805 qualified listings available

Potential Applications

- Aerospace
- Instrumentation
- Appliances
- Vending machines
- Timing devices
- Office equipment
- Computer/business equipment
- Test instruments
- Medical/dental equipment
- Communications equipment
- HVAC equipment
- Manually operated devices
- Valves

Description

MICRO SWITCH™ SM Series subminiature basic switches are used for simple or precision on/off application needs. The MICRO SWITCH™ SM Series switches are slightly larger than the MICRO SWITCH™ SX Series switches. These switches combine small size and light weight with ample electrical capacity, precision operation and long life.

| Product Specifications | |
|------------------------|--|
| Switch Type | MICRO SWITCH™ Subminiature 12,7 mm H x 6,35 mm W x 20,3 mm L [0.5 in H x 0.25 in W x 0.8 in L] |
| Sealed | No |
| Ampere Rating | 5 A |
| Circuitry | Single Pole Double Throw (SPDT) |
| Actuator | Straight Lever |
| Termination | Solder |

| | |
|--------------------------------|--|
| Operating Temperature Range | -55 °C to 125 °C [-67 °F to 257 °F] |
| Voltage | 250 Vac |
| Approvals | CE,CSA,UL,ENEC |
| Actuator Length | 44,8 mm [1.765 in] |
| Contact Type | Silver |
| Operating Force (O.F.) | 0,15 N [0.53 oz] max. |
| Release Force (R.F.) | 0,02 N [0.07 oz] max. |
| Pretravel (P.T.) | 7,87 mm [0.310 in] max. |
| Overtravel (O.T.) | 1,45 mm [0.057 in] min. |
| Differential Travel (D.T.) | 2,8 mm [0.110 in] max. |
| Operating Position (O.P.) | 7,11 mm ± 4,3 mm [0.280 in ± 0.170 in] |
| Housing Material | General Purpose Phenolic |
| High Temperature | 204 °C [400 °F] |
| CE mark | 61058-1 |
| UL File # | E12252 |
| CSA File # | LR41372 |
| Agency Approvals and Standards | 1054 |
| Mounting Centers | 9,65 mm [0.38 in] |
| Maximum Tightening Torque | 0,26 N m [2.3 in lb] |
| Weight | 2,72 g [0.006 lb] |
| Package Height | 12,4 mm [0.49 in] |
| Package Width | 6,35 mm [0.25 in] |
| Package Length | 19,8 mm [0.78 in] |
| Recommended For | 44,8 mm [1.765 in] straight lever |
| Availability | Global |
| UNSPSC Code | 30211905 |
| UNSPSC Commodity | 30211905 Snap switches |
| Series Name | SM |

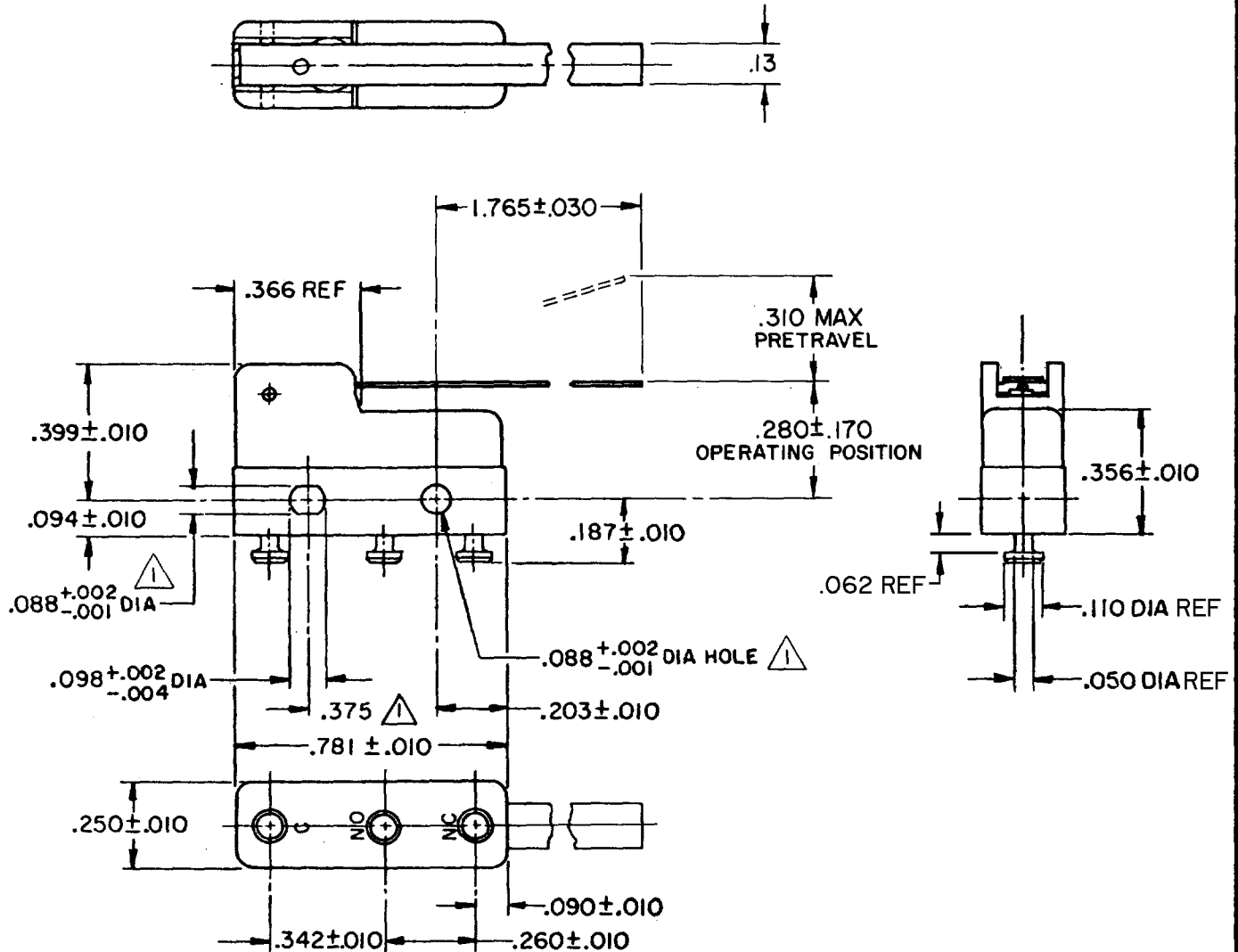
MICRO SWITCH

FREEPOR ILLINOIS, U. S. A
A DIVISION OF HONEYWELL
FED. CODE. CODE 91929

SWITCH-BASIC

CATALOG LISTING
311SM3-T

DRAWING NUMBER
311SM3-T
PAGE 1 OF 1
REPLACES SR 11750
ISSUE **M**
5
REVISIONS:
A CO-31079 SR H 27 SEP 72
B CO32564 DB W 9 OCT 73
C CO-77768 S A D 12 JUL 94
D CO-95172 J J A 21 JUNE 99
CHECKED PRW
LSD
FORMTEK
FD-52848
DRAWN SR H 27 SEP 72
FORMTEK



NOTE-
1- MOUNTING HOLES WILL ACCEPT PINS OR SCREWS OF .087 MAX DIA ON .375 ± .002 CENTERS
2- SWITCH WILL WITHSTAND TEMPERATURE OF 250°F
3- TERMINALS ARE PLATED FOR SOLDERING

THIS DRAWING COVERS A PROPRIETARY ITEM AND IS THE PROPERTY OF MICRO SWITCH, A DIVISION OF HONEYWELL. THIS DRAWING IS NOT TO BE COPIED OR USED WITHOUT THE APPROVAL OF MICRO SWITCH.

| CHARACTERISTICS | ELECTRICAL DATA | SCALE 2 TO 1 |
|-----------------------------------|---|--|
| OPERATING FORCE ---- 15 GRAM MAX | CONTACT ARRANGEMENT S P D T | DO NOT SCALE PRINT |
| RELEASE FORCE ----- 2 GRAM MIN | 30 VOLTS DC RATING | UNLESS OTHERWISE NOTED DIMENSIONS ARE IN INCHES |
| DIFFERENTIAL TRAVEL ---- .110 MAX | INDUCTIVE ---- SEA LEVEL --- 3 AMP 50,000 FT --- 2.5 AMP | TOLERANCES ARE ONE PLACE (.0) ± .030 |
| OVERTRAVEL ----- .057 MIN | RESISTIVE ---- SEA LEVEL --- 5 AMP 50,000 FT --- 5 AMP | TWO PLACE (.00) ± .015 |
| | MAXIMUM INRUSH ----- 24 AMP | THREE PLACE (.000) ± .008 |
| | L4 5A 250 VAC | ANGLES ± |
| | | WEIGHT .006 LB MAX |